

Skillmapping

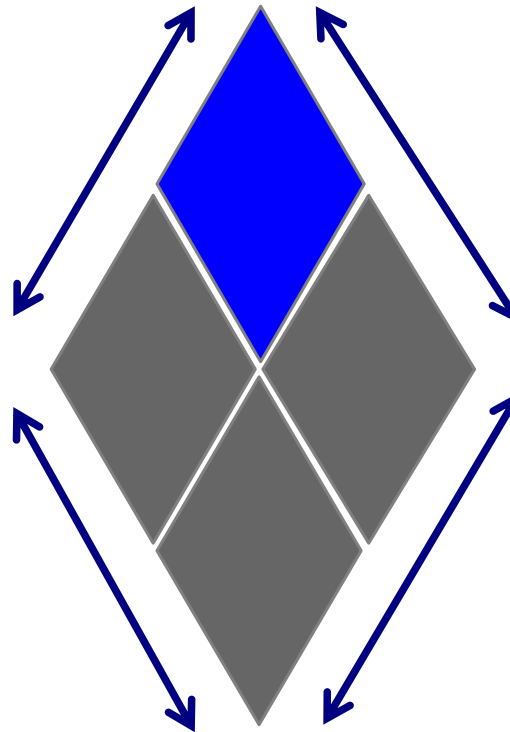
Managerial assessment “on-the-fly”



Skillmapping is...

An online kit that can be used by an unlimited number of users

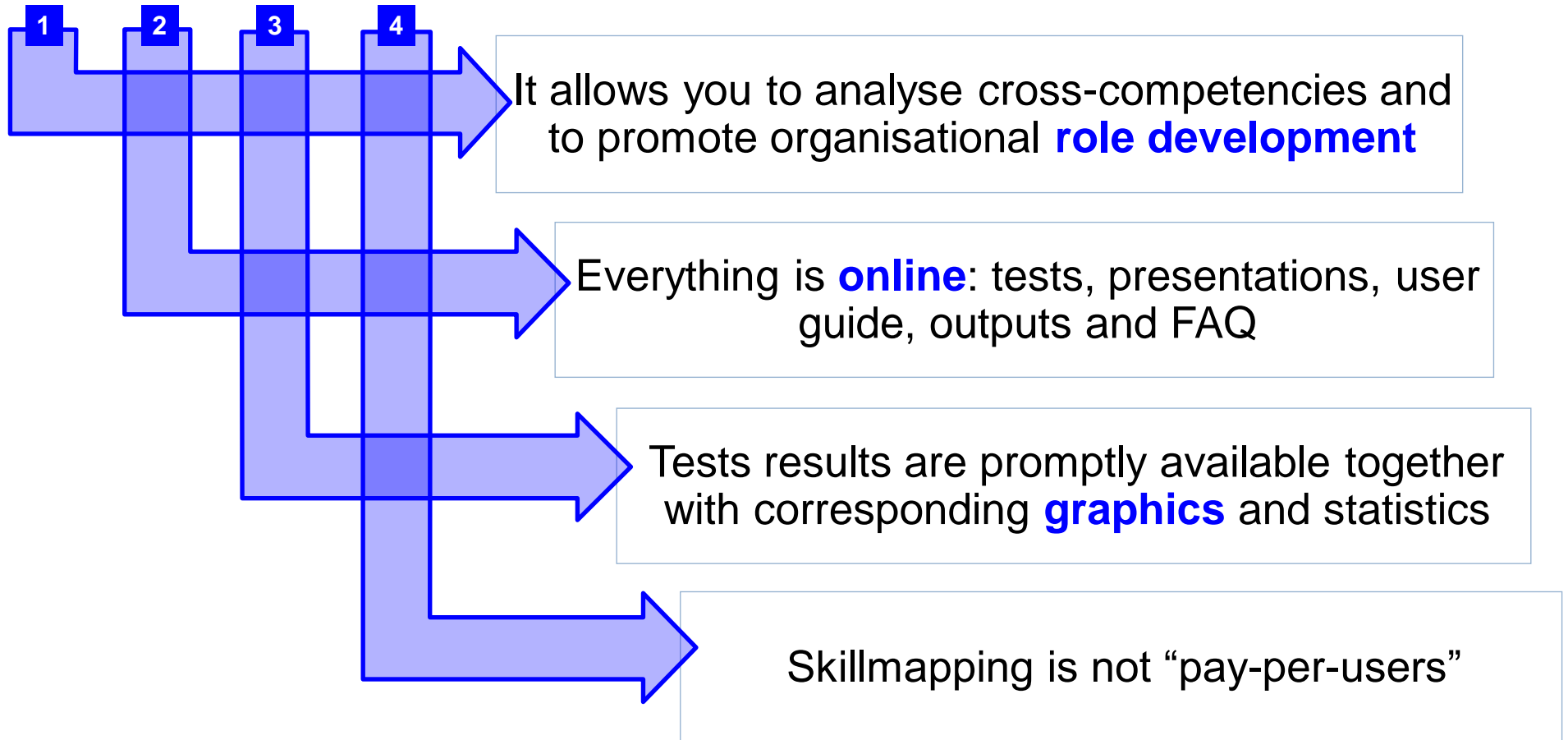
A sophisticated tool to compare and analyse any level of organisational structure



An instant snapshot for the 4 areas that guide and determine human action within organisations

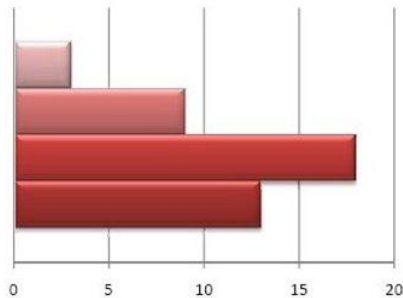
A stimulus for possible areas of intervention

Why to use Skillmapping

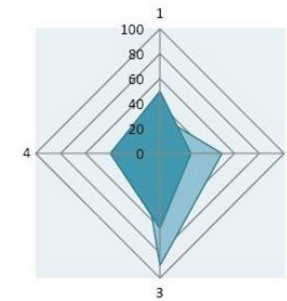


The assessment set

Negotiation approach

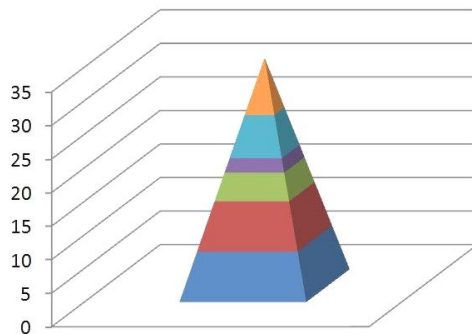


Dominant communication

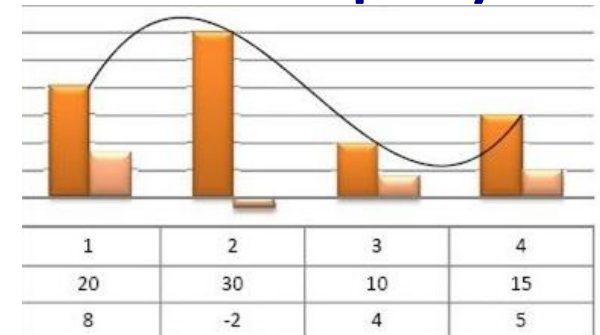


Skillmapping

Motivating needs



Leadership style

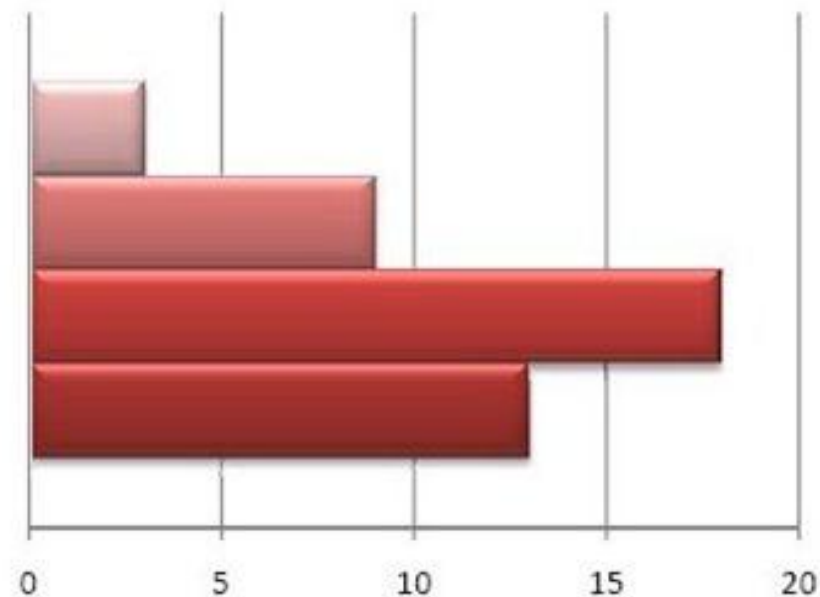


The assessment set

Negotiation approach

A test to investigate the predominant styles of negotiation, highlighting the pros and cons of attitudes adopted towards interlocutors.

Skillmapping

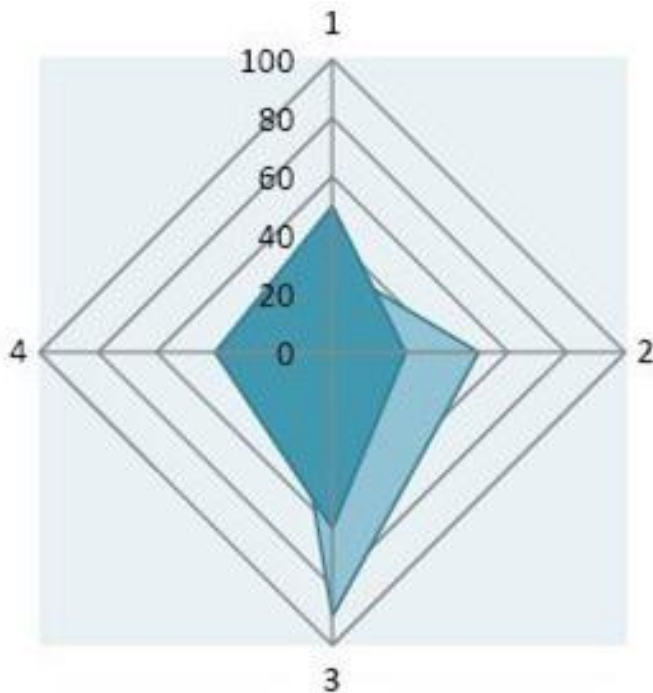


The assessment set

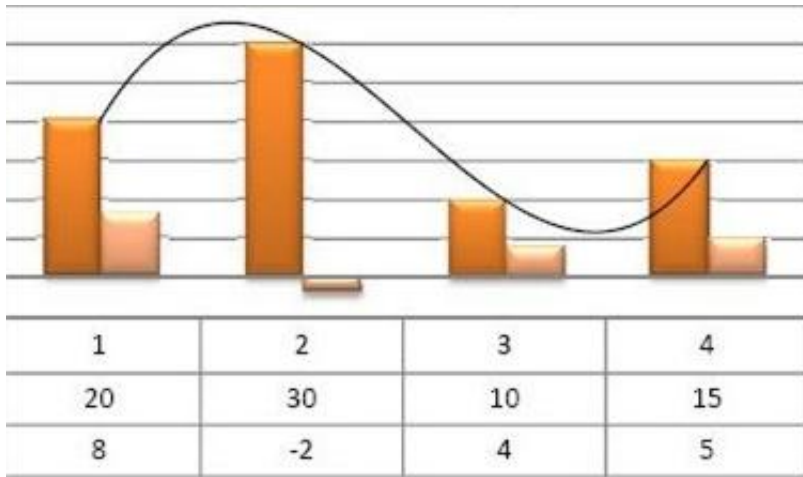
Dominant communication

This test identifies the dominant communication style and its effectiveness in relation to the situation and the interlocutors

Skillmapping



The assessment set

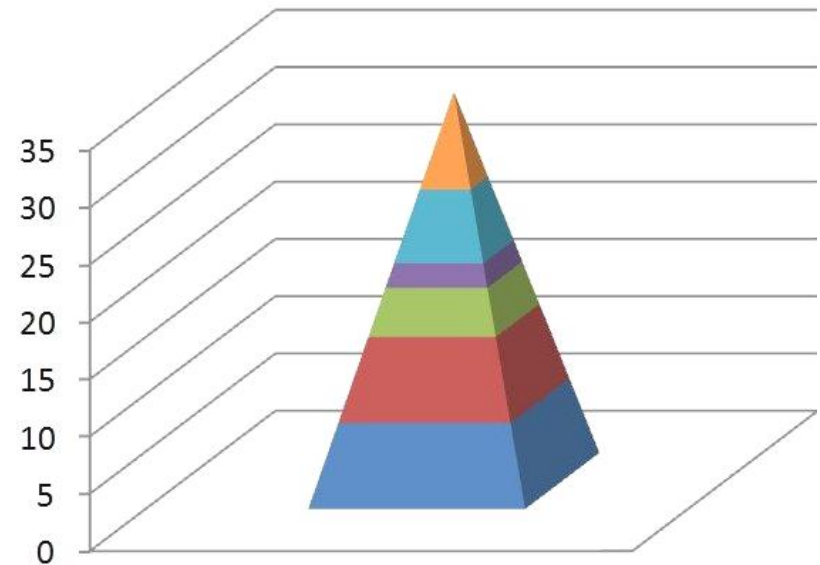


Skillmapping

Leadership style

A survey to measure the frequency and effectiveness of the leadership style adopted in a managerial role, in relation to co-workers and to the environment

The assessment set



Skillmapping

Motivating needs

An enquiry to show which levers are most suited to promote organisational development and professional self-actualization

dTeam provides:

TOOLS

- LMS access
- Unlimited licence (no “pay-per-users”)
- Connection to your Docebo platform

SERVICES

- Outputs evaluation and analysis support
- Use and feedback report
- Certification training, to enable the use and evaluation of Skillmapping outputs